

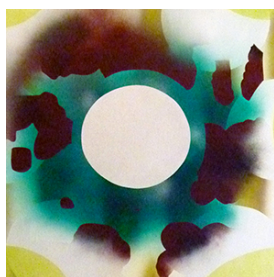
# (detail)

**H-Project Space, Bangkok - 5th June - 6th July 2014.**

**Transition Gallery, London – 20th September – 12th October 2014**

**The Usher Gallery, Lincoln – 19th December 2014 - 19th April 2015**

**Curated by Andrew Bracey**



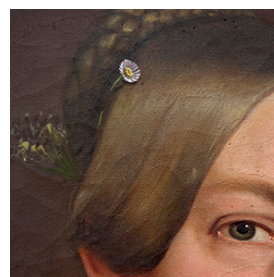
Shirley Kaneda



Laura Lancaster



Fabian Marcaccio



Olivia Notaro

**(detail) is an innovative new exhibition that features the work of 118 international artists, who have each selected a close-up from one of their paintings. These details will be printed and displayed together to give both a tantalising glimpse into the artworks, and create a huge collage of images. The exhibition will launch at H-Project Space in Bangkok this summer, before touring to Transition Gallery and The Usher Gallery in the UK later this year.**

At H-Project Space the exhibition will respond to the unique setting of the gallery, a traditionally constructed Thai house. The 118 artworks will fit into the distinctive wooden framework of the walls, completely filling and transforming the space. Seen on mass, the different artworks will become a form of collage. Connections between the painting details are deliberately made by the curator in the display, as well as being formed serendipitously. Viewers are encouraged to make their own associations and interpretations of the juxtaposition of images.

The show will be re-presented and re-imagined as it moves from H-Project Space, Bangkok to the more conventional exhibition spaces of Transition Gallery, London and The Usher Gallery, Lincoln, creating a show that is responsive to each venue. *(detail)* features a wide range of painters, from the well-established to recent graduates. Their work encompasses abstraction, landscape, figuration and conceptually driven practices and employs a wide variety of mediums.

The reproduced close-up allows us to focus on the brush strokes, surface and minutiae of the painting. It is most commonly used in the art world in the pages of the exhibition catalogues or monographs. The idea of the detail is also something that is particular to the painters' approach to both making a painting and viewing work in the gallery.

The exhibition's curator Andrew Bracey explains:

*"In the studio I have found my own relationship to working on a painting is up close to it, with only occasional glimpses of the whole as I step back. This focus on this particular painter's viewpoint of the painting provoked the idea for this exhibition. This exhibition is an attempt to bring this studio mentality to the gallery. There is a power in the detail, it offers up fresh possibilities for viewing painting."*

**Featured artists include:**

David Reed, Fiona Rae, Sigrid Holmwood, Stefan Sehler, Neal Rock, Shirley Kaneda, Pavel Buchler, Yelena Popova, Clem Crosby, Daniel Sturgis, Clyde Hopkins, Michael Fullerton, Gordon Cheung, Katie Pratt, Fabian Marcaccio, Jamie Shovlin, Sarah Pickstone, Dan Hays, Alexis Harding, Robert Holyhead, Mimei Thompson, Miho Sato, Andrew Stahl and many more.

For more information and press images contact:

Thailand - hgallerythailand@gmail.com tel: 085 021 5508  
UK – Charlotte Pedley – charlotte\_pedley@hotmail.com

**Note for editors**

A catalogue to accompany the exhibition will be published by Transition Editions to coincide with the exhibition's opening at Transition Gallery on September 19<sup>th</sup> 2014.

**About the curator**

Andrew Bracey (b.1978) is an artist and curator, based in Lincolnshire, England. Solo exhibitions include Nottingham Castle (2014), Manchester Art Gallery (2009), Wolverhampton Art Gallery (2007) and firstsite, Colchester (2006). Recent group exhibitions include *A Machine Aesthetic* (2013/4), Gallery North, Newcastle and touring, *The Ends of Art* (2013), *Beton7*, Athens and *Possession (I)* (2013), BACC, Bangkok. Curated exhibitions include *Misdirect Movies* (2013), Royal Standard, Liverpool, and touring, *Crocodiles With a Second Skin Thrash* (2011) Over+Out, Lincoln, *Unspooling: Artists & Cinema* (2010), Cornerhouse, Manchester. He is Programme Leader of MA Fine Art and MA Contemporary Curatorial Practice at The University of Lincoln, England.

**Venues:**

H-Project Space, Bangkok, Thailand - [www.hgallerybkk.com](http://www.hgallerybkk.com)  
Transition Gallery, London - [www.transitiongallery.co.uk](http://www.transitiongallery.co.uk)  
The Usher Gallery, Lincoln - [www.thecollectionmuseum.com](http://www.thecollectionmuseum.com)

**Event**

H Project Space, Bangkok, Saturday 7<sup>th</sup> June – 2-4pm  
The curator will be in attendance on Saturday, June 7 from 2-4pm to discuss the installation with Brian Curtin and Prof. Steve Dutton, one of the exhibiting artists.

**Full list of artists in show:**

Alec Shepley, Alexis Harding, Alison Erika Forde, Alastair Payne, Alli Sharma, Alun Williams, Andrea Guiseppa Corciulo, Andrew Bick, Andrew Bracey, Andrew Graves, Andrew Seto, Andrew Stahl, Andy Harper, Annabel Dover, Annabel Tilley, Annabelle Sheldon, Anthony Frost, Bartosz Beda, Ben Cove, Benet Spencer, Cathy Lomax, Christopher Bagnol, Clem Crosby, Clyde Hopkins, Corrina Spencer, Craig Barber, Damien Meade, Dan Hays, Dan Perfect, Daniel Sturgis, David Dipre, David Manley, David Reed, David Ryan, Dominic Shepherd, Eleanor Moreton, Emma Talbot, Enzo Marra, Eric Butcher, Estelle Thompson, Euripides Altintzoglou, Eve Ackroyd, Evi Grigoropoulou, Fabian Marcaccio, Fiona Curran,

Fiona Macdonald, Fiona Rae, G L Brierley, Geraint Evans, Gordon Cheung, Gordon Dalton, Graham Crowley, Hamish McLain, Hannah Knox, Hanneline Visnes, Henny Acloque, Henrietta Simson, Iain Andrews, Isabel Young, Jamie Shovlin, Jay Oliver, Jennifer Maidment, John Rimmer, Julia Schwadron, Julie Heffernan, Julie Langsam, Karin Davie, Katie Pratt, Katrina Blannin, Laura Lancaster, Lesley Halliwell, Lindsay Bull, Louisa Chambers, Louise Bristow, Luke Frost, Maggie Ayliffe, Magnus Quaife, Mark Fairnington, Mark Kennard, Mark Wright, Medina Hammad, Michael Fullerton, Michael Roberts, Mick Finch, Miho Sato, Mik Godley, Mimei Thompson, Narbi Price, Natasha Kidd, Neal Rock, Olivia Notaro, Paul Edwards, Paul Winstanley, Pavel Büchler, Phoebe Mitchell, Rachel Lumsden, Rafal Topolewski, Rick Copsey, Robert Holyhead, Rosalind Davis, Roger Wilson, Ruth Solomons, Sarah R Key, Sarah Pickstone, Sharon Hall, Shirley Kaneda, Sigrid Holmwood, Simón Granell, Soichiro Shimizu, Stefan Sehler, Steve Dutton, Steve Ingman, Terry Shave, Thomas M Wright, Tom Hackney, Tony Smith, Tristram J Aver, Yelena Popova

The exhibition is supported by Arts Council England and The University of Lincoln.



**H PROJECT SPACE**



**The Collection**  
Art and Archaeology in Lincolnshire